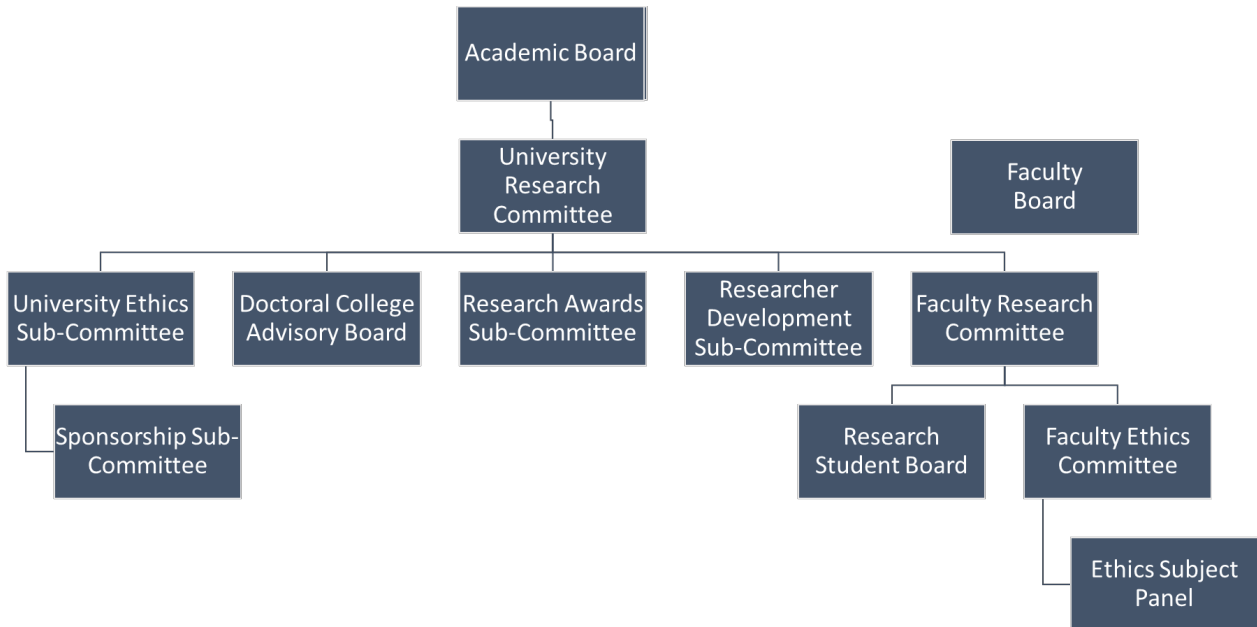


Research Governance & Management

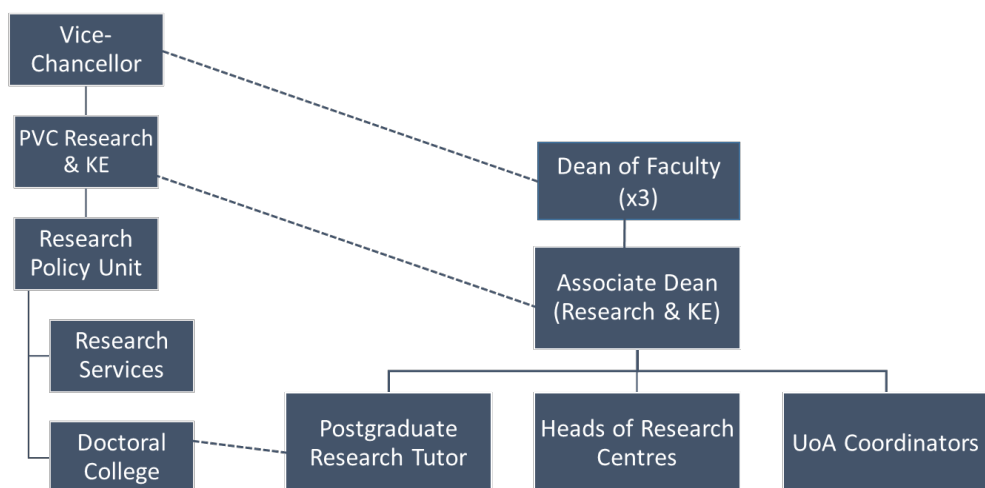
1) Governance

The University Research Committee together with its sub-committees oversees all research activities at the University. Each Faculty has a Faculty Research Committee as a sub-committee of Faculty Board to oversee research activities in the Faculty. The Faculty Research Committee has sub-committees that mirror those of the University Research Committee.



2) Management of Research

University-wide strategic oversight for Research activity at the University of Wolverhampton is provided by the Pro-Vice Chancellor Research & KE.



University Level Management of Research

Pro-Vice Chancellor Research & KE

The Pro-Vice Chancellor Research & KE is the Head of the Research Policy Unit, and oversees the Doctoral College and Research Services, and is responsible to the Vice-Chancellor.

Research Policy Unit

The Research Policy Unit develops, implements and monitors the University Research Strategy. It is responsible for:

- supporting the development of research projects and programmes;
- the enhancement of research quality and developing our Research Excellence Framework (REF) submissions;
- co-ordination of research integrity activities ethics, policy, governance and compliance with research Concordats;
- management and reporting of research-related management information;
- providing dedicated impact support for pre and post award activities;
- development and implementation of research systems and research operations;
- managing the Research Internal Funding & Investment (RIF) and Quality Research (QR) funding;
- providing specialist bidding support guidance for a variety of projects funded from external sources;
- development and dissemination of institutional research publications and other communications;
- contributing to researcher development activities (with Doctoral College).

The Directorate oversees the management of institutional submissions to research assessment exercises (e.g. RAE 2008, REF 2014, 2021) and statutory returns. It works with the International Centre to internationalise research undertaken by the University and assist with the development of networks for Horizon Europe or other forthcoming international initiatives.

It also works with others in the University to address questions around gender imbalance in research leadership positions and to provide the framework to support the development of researchers at all stages of their career in collaboration with HR and the University Careers Service.

Doctoral College

The Doctoral College's mission is to support all staff and student researchers at the University of Wolverhampton. All of our postgraduate research students studying in the UK or abroad, part-time or full-time, are part of both their Faculty and the Doctoral College community.

The Doctoral College coordinates and, in collaboration with the Faculties, delivers a comprehensive programme of research training and development for PGR students and staff, coordinates the University's Early Researcher Award Scheme, research student representation, organises University-wide research events and conferences, and advertises faculty research events across the University. The Director of the Doctoral College reports to the Dean of Research. For more information visit: www.wlv.ac.uk/DoctoralCollege

Research Services

Research Services advises, guides and supports research strategic and operational priorities and activities of academic staff with Significant Responsibility for Research within the University's Faculties and Institutes across the range of their business and the academic mission of the University.

For more information visit: www.wlv.ac.uk/research/researchservices

Faculty Level Management of Research

Dean of Faculty

The Dean of Faculty has overall responsibility for research and knowledge exchange within a Faculty.

Associate Dean Research & KE

Each Faculty has an Associate Dean who will have responsibility for research and knowledge exchange.

REF Unit of Assessment (UoA) Coordinator(s)

Each REF Unit of Assessment has at least one coordinator who is responsible for preparing the REF submission in line with the funding bodies' guidance. The UoA coordinator(s) report to the Faculty Associate Dean with responsibility for research, and via the REF Strategy Panel to the University Research Committee.

Research Centres

Research Centres are the University's formal research units. Their governance and management is in accordance with the guidelines approved by Academic Board.

Postgraduate Research Student Management

Postgraduate Research Tutor(s)

Each Faculty has a Postgraduate Research Tutor(s) who is responsible for admission decisions and monitoring related to postgraduate research students within the Faculty, in line with the Research Degree Regulations and associated handbooks. The Postgraduate Research Tutor reports to the Faculty Research Student Board and the Research Awards Sub-committee of URC.

Research Support Tutor(s)

Each Faculty has a Research Support Tutor, who is independent of supervisory teams and provides advice and guidance to Research Students on general matters, including but not limited to welfare and support facilities, pastoral support, counselling, careers and finance in the Faculty and the University.

Research Skills Development Tutor(s)

Each Faculty has a Research Skills Development Tutor to coordinate the Faculty's skills development programmes, research seminars and events for Research Students and liaison with the Doctoral College.